



INNOVATION /

Winter 2024 Edition

TABLE OF CONTENTS

Partnering with you for maximum productivity



RESOURCE MANAGEMENT

- Heavy Equipment Management (HEM)
- Vehicle Inventory Management (VIM)
- Tool & Asset Management
- Fieldwire

HIGH PERFORMING TOOLS

- SIW 10-22 Impact wrench
- SIW 6AT-22 Impact wrench
- SID 8-22 Impact driver
- SF 10W-22 Cordless drill driver
- EXO-T-22 Tool balancer
- SC 6WP-22 Circular saw

WORK PACKAGE SOLUTIONS

- Drilling and Rebar**
 - TE 50-22 Rotary Hammer
 - TE-CX 5 Drill bit
 - Concrete drilling
- Fastening to Steel**
 - Steel fastening systems
 - SBT 6-22 Drill and set system

- Interior Finish**
 - CFS BTS Bottom track seal
- Diamond Cutting & Coring**
 - DST 10-CA Wall saw
 - DST 20-CA Wall saw
 - SPX-L X-Change Module

ADDITIONAL INNOVATIONS

- Reciprocating saw blades
- Chop Saw abrasive blades
- Repair services
- PT-C Thermal camera

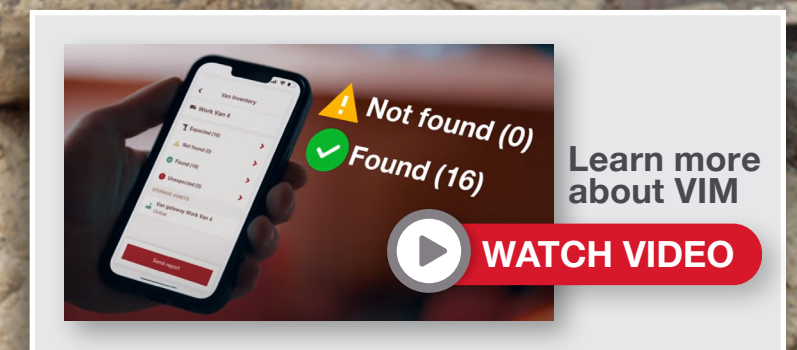
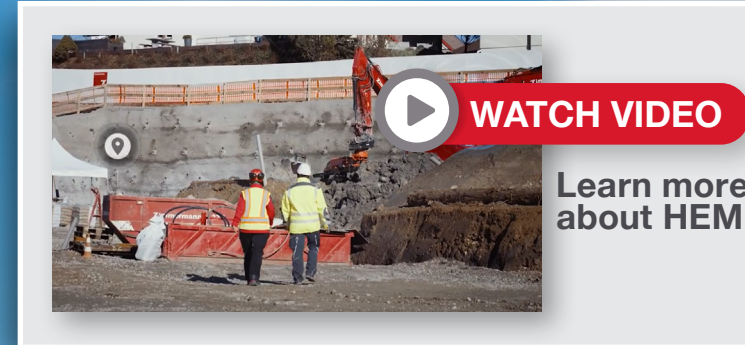
SIMPLIFY OPERATIONS AND MAXIMIZE LABOR HOURS /

Heavy Equipment Management & Vehicle Inventory Management

Reduce manual processes and streamline asset management with Heavy Equipment Management (HEM) and Vehicle Inventory Management (VIM). This is just one of the solutions ON!Track offers to help you achieve greater asset transparency, maximize productivity, and gain more peace of mind, all on a single platform.

Gain more insight into your critical jobsite assets with Telematic Gateways and Van Gateways. Better enhance safety and visibility with ON!Track solutions that help keep your projects moving without the tedious manual tracking processes that can take up your entire day.

[LEARN MORE](#)



SOLUTION SERVICES FOR MAXIMIZED PRODUCTIVITY

Streamline and simplify jobsite management and tool crib operations to help cut costs, boost productivity, and optimize resource allocation with Hilti's resource management solutions, including ON!Track and Tool Fleet Management.

Take control of your assets and your jobsite by managing your equipment and resources — regardless of manufacturer — from anywhere with our user-friendly app and advanced hardware. Here are just a few ways Hilti's resource management solutions help transform the way you manage your jobsite:

- **Optimize Resources:** Identify and evaluate costs by gaining insights into tool and material usage
- **Streamline Tool Crib Operations:** Help minimize downtime and extend the lifespan of your tools with quicker no cost repairs, asset tracking and proactive maintenance
- **Enhance Transparency:** Gain visibility into your asset usage, location, and inventory
- **Flexibility:** Tool up or down to meet project-related tool needs

LEARN MORE

CURIOUS ABOUT WHAT
SMARTER ASSET AND
RESOURCE MANAGEMENT
CAN DO FOR YOUR BUSINESS?

How do I know if
Fleet Management and Tools on Demand would benefit my company, and what are the next steps?



1 Allow us to analyze your tool
crib and processes



2 We'll then build a
customized solution based
on your company and
project needs



3 Our team will help remove
any old tools, and train your
crews on the new tools



FIELDWIRE
A GROUP COMPANY OF HILTI

STREAMLINE PROJECT MANAGEMENT WORKFLOWS

Using Fieldwire, the all-in-one tool for the jobsite

Fieldwire's Project Management Suite is built to streamline important construction documents such as RFIs, Specifications, Submittals, and Change Orders. The jobsite management app is designed to give field and office teams powerful construction management capabilities no matter where they are working.



RFIs

link to plans to help
prevent rework



Specifications

manage specs with
version control



Submittals

streamline the
approval process



Change Orders

manage and track
added costs

LEARN MORE AND REQUEST A DEMO



WATCH VIDEO





UP TO
85%
MORE TORQUE



1 INCH
SHORTER
IN SIZE

MAXIMIZED PERFORMANCE AT A MINIMIZED SIZE

SIW 10-22 3/4" Impact wrench

Leverage higher performance and get more work per charge with the new, high-performing SIW 10-22.

Achieve greater torque and productivity when you need it most. This 3/4" impact wrench is built with a robust brushless motor and a larger, faster, and more precise hammering mechanism, making it the ultimate choice for enhanced efficiency, performance, and reliability.



FASTER, SAFER FASTENING

with digital reporting on the
Nuron impact wrench portfolio

Help improve the productivity and reliability of fastening across all your projects, regardless of size, with the SI-AT-22 adaptive torque module. By pairing the SI-AT-22 with the SIW 4AT-22 or SIW 6AT-22, you can leverage a system designed to help boost productivity and streamline your workflow from installation to documentation.

Ensure your jobsite is inspection ready with the help of digitized data from the SI-AT-22, providing confirmation that anchors and fasteners on your project are properly installed. This streamlined process not only helps expedite more accurate installations but also minimizes the need for costly and time-consuming documentation work or reinstallation, helping to conserve your valuable resources.

SHOP
NOW

SI AT-22


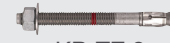







SHOP
NOW

SIW 4AT-22

COMING
SOON

SIW 6AT-22

ANCHORS & INSTALLATION SYSTEMS

ANCHORS		INSTALLATION SYSTEMS	
 KB-TZ	 KB-TZ 2	 MT TFB	 LN-AV-FL-M10 A4 Locking nut
 KB3	 KB1	 MT TL	
	 HAC Anchor	 MT TL OC	



**ADD THE SID 8-22
TO YOUR BUCKET
LIST**



**IMPROVING
THE
INDUSTRY
TOGETHER
WITH
NURON**

THE ESSENTIAL TOOL FOR THE ESSENTIAL WORKER

SID 8-22 7/16" Impact driver

Experience the power of Nuron with the new SID 8-22. Leverage more productivity and safety when facing the challenges of overhead work on your most demanding jobs. The cordless, compact, and ergonomic build of this impact driver provides greater power and performance, without compromising safety and reliability on the jobsite.

Achieve high-speed drilling and fastening with extended runtime, powered by Nuron, all while reducing fatigue and safety hazards on the jobsite. Day or night, the LED illumination feature brings more comfort and visibility for round-the-clock work. Hilti's trusted warranty and dedicated support help you stay focused on the valuable work benefitting your crew and community.

**SHOP
NOW**

POWER THROUGH WITH MORE PERFORMANCE

SF 10W-22 Cordless drill driver

Introducing the SF 10W-22, the ultimate drilling solution for wood and metal now on the Nuron cordless platform. With four speeds to meet your project needs, this powerful tool effortlessly handles the toughest jobs, like drilling large holes into wood and metal.

Equipped with Active Torque Control (ATC) technology, this cordless drill driver offers safer drilling by reducing the risk of injury or accidents from uncontrollable spinning. Pair it with our high-performing bits and accessories for unparalleled performance and ultimate productivity.

**SHOP
NOW**



**MINIMIZE
RISK OF
INJURY
WITH ACTIVE
TORQUE
CONTROL
(ATC)**



**MOST POWERFUL AND
LONGEST RUN TIME ON THE
MARKET WITH THE NURON
ALL-ON-ONE PLATFORM**

ACCESSORIES

Hilti tools deliver higher performance when paired with our accessories



Spade Bit WDB-S-H1



Spade Bit WDB-S-H1



Self-Feed Bit



Bi-Metal hole Saw

DRILL INTO PRODUCTIVITY /

Concrete drilling is a crucial job function on jobsites where performance can make or break project timelines. Maximize efficiency with Hilti's cordless SDS Plus hammer drilling systems for superior concrete drilling.

Designed specifically for the toughest concrete, our rotary hammers are equipped with safety features like Active Vibration Reduction (AVR) and Active Torque Control (ATC) to help enhance user comfort, operational safety, and optimal handling while maneuvering through tight or challenging spaces. From light to heavy-duty tasks, these hammer drills provide greater adaptability for a range of concrete drilling applications.

DISCOVER SDS PLUS CORDLESS ROTARY HAMMERS



FORMWORK / TE 5-22

When shoring is pulled, the powerful TE 5-22 cordless rotary hammer removes larger concrete protrusions from wall joints and the long tool body makes the TE 5-22 a more comfortable rotary hammer for drilling downwards.

[Learn more >](#)



BASEPLATE / TE 30-22

Speed up drilling with the cordless TE 30-22 SDS-plus rotary hammer and drill holes for anchors and rebar connections as well as through-holes in concrete with with a wider optimal drilling range.

[Learn more >](#)



ELECTRICAL INSTALLATION / TE 4-22

Experience the compact but highly capable TE 4-22 for your Overhead drilling applications in concrete, such as for hanging pipes and conduits, MEP installations and suspended ceilings.

[Learn more >](#)

DRILL THROUGH REBAR EASIER /

TE-CX 5 Drill bit


TE DRS 4/6
— DUST
COLLECTION
WHILE
DRILLING


UP TO 30% FASTER
DRILLING SPEED

SHOP
NOW

Drill up to 30% faster when you use the new TE-CX 5 drill bit with your TE hammer drill — and don't let rebar slow you down. With reengineered welding methods and innovative technology advancements, this new drill bit helps maximize your performance.

Make your drilling applications faster and safer when you leverage the power and performance of Hilti's complete system of TE tools, drill bits, and dust control solutions.



CORDLESS ROTARY HAMMER FOR EVERY JOB /

TE 50-22 Rotary hammer

Delivering up to 60% more work per charge on your drilling applications, the new Nuron-powered TE 50-22 Rotary hammer is a top performer on jobsites, especially when used with our TE-YX drill bits. Cut the cord and experience the simplicity of Nuron without compromising power and performance. Whether it's drilling or demolition, we offer a dynamic portfolio of rotary hammers to help meet your project needs.

SHOP
NOW



Experience improved efficiency on the job with our entire rotary hammer portfolio — offering strength, versatility, and simplicity.



Enjoy added comfort and control and improved safety during your most demanding drilling and demolition jobs with Active Torque Control (ATC) and Active Vibration Reduction (AVR).



Unlock the full potential of Nuron and see productivity grow on your jobsites and across your business with the help of our dedicated customer support, and warranty and repair services.

DRILL UP TO 50%
FASTER WITH TE-YX
BITS



UP TO 60%
MORE WORK
PER CHARGE

STREAMLINE CONSTRUCTION WITH ADVANCED STEEL FASTENING SYSTEMS /

Achieve faster, more efficient steel fastening with Hilti's innovative solutions. Break away from traditional methods like stud welding, bolting, and clamping and adopt our code-compliant, flexible systems that help boost productivity and simplify inspections.

Adaptable for various steel deck profiles, our frame fastening systems use powder-actuated or screw fasteners, while our sidelong fastening systems utilize screw fasteners to streamline steel deck panel connections. Experience the strength of our new fusion technology and get the higher-quality fastening you need for the toughest applications while minimizing the need for rework. Take your fastening to steel applications to the next level with our comprehensive portfolio.

DISCOVER INNOVATIVE FASTENING TO STEEL SOLUTIONS



WATCH VIDEO

See what others are saying

SHARP TIP FASTENING

A cost-competitive, one-step solution for high-frequency fastening where speed is critical. With X-R or X-ST sharp tip fasteners, a sharp tip stainless steel fastener is driven by a battery powered or powder-actuated tool into steel and soft metals like aluminum, creating a higher-quality connection.



WATCH VIDEO

See what others are saying

BLUNT TIP FASTENING

Versatile 2-step solutions for daily fastening to steel across a broad range of applications. With X-BT or S-BT blunt tip fasteners, a threaded fastener is driven or screwed into a pre-drilled hole in the steel base material by a powder or battery-powered tool.



WATCH VIDEO

See what others are saying

FUSION WELDING

For higher-strength fastening to steel in demanding, engineered applications — combines welding performance with more ease of use. With F-BT stud fusion, a threaded metal stud is welded by a battery-powered tool on a prepared surface. The optional washer then seals the prepared surface for a fastening point with long-term corrosion resistance.

SIMPLIFIED FOR EVERYDAY FASTENING TO STEEL

SBT 6-22 Nuron drill & set system

Increase productivity by simplifying and speeding up your fastening to steel workflow with Hilti's comprehensive SBT 6-22 Nuron drill and set system comprised of S-BT HL stud, and SBT 6-22 cordless drill. Designed to boost operator work quality, the SBT 6-22 Nuron cordless drill offers enhanced setting and control features, helping ensure your team drills more accurately, reducing the wasted time from extra drilling, and extending bit life even in the toughest steel.

Experience the simplicity and flexibility of our stainless and carbon steel S-BT HL Studs, crafted for more efficient one-tool installation, improved loads, and wide application coverage. The tapered drill bit efficiently removes base material coating, while the SBT 6-22 provides precision stud placement without the hassle of calibration. Help simplify your projects using one system for all your steel fastening needs.

**SHOP
NOW**

DRILL ASSIST MODE

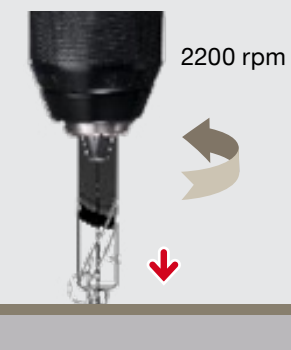
Utilize the Drill Assist Mode for optimum drilling depth and S-BT smart fastening to help eliminate improperly set studs with a quality check



ONE-TOOL INSTALLATION

Allows you to use same tool to drill the pilot hole, set the stud, and tighten the nut or grating disk.

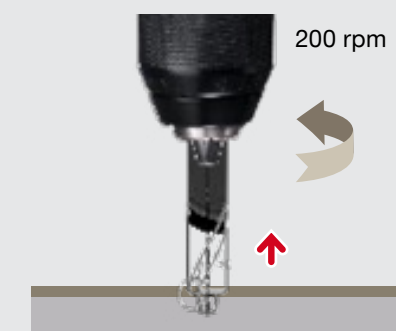
DRILLING WORKFLOW



- ① Tool is in gear 2 & in BT drill clutch setting with >80% trigger and tool is at full RPM



- ② User drills pilot hole till the tool detects the stepped drill bit reaching the base material



- ③ The drilling slows down and the user removes the tool easily.

FASTER, CLEANER CONCRETE CUTTING /


Next generation DST 10-CA
& DST 20-CA wall saws

Elevate your concrete cutting with Hilti's latest wall saw systems, the DST 10-CA and DST 20-CA. With a 24" to 48" diameter range, the DST 10-CA cuts with less effort through 21" of concrete with the systems' 48" blade. The dry cut capabilities, including water bypass, dry flange, and dry cut set, address a long-standing industry need, providing a cleaner, easier cutting experience.

The 62" blade diameter DST 20-CA delivers high horsepower and versatility, featuring an integrated flange bolt for standard and flush cutting and a Pull-Push CUT Assist mode to help deliver faster results on the jobsite and boost productivity.



**SIMPLIFIED CUTTING PROCESS
WITH THE NEW FLUSH-CUTTING
CONCRETE INTEGRATED
SOLUTION**



**THE DST 10-CA
BOASTS AN
IMPRESSIVE
CUTTING DEPTH
ADVANTAGE
OF 6" OVER
COMPETITORS IN
THE 10KW POWER
CLASS**



SPX Wall saw blades

Maximize the performance of your Hilti DST 10-CA and DST 20-CA wall saws with our Equidist technology SPX wall saw blades. Precisely positioned diamonds for greater cutting performance help maintain a constant cutting speed over the whole life of the blade and are designed for the most challenging conditions.



SIMPLIFIED CORE DRILLING /

Complete system to boost productivity

Coring can be complex, time-consuming, messy, require multiple people, and entail the difficult task of finding and transporting water. To help boost productivity, we not only have multiple core rigs for any application, but an entire system ready to back you up, no matter how demanding the task.

[EXPLORE HILTI CORE DRILLING SYSTEMS](#)



DD AF-CA AUTO FEED

Level up your coring with our CutAssist technology, to experience semiautonomous diamond drilling.



WATER MANAGEMENT SYSTEM

Keeping the jobsite cleaner saving you more time during wet diamond coring applications.



DIAMOND CORE BITS

Our X-Change Module with patented Equidist diamond segment technology now carries the equivalent of five core bits with one barrel and reduces core bit tube consumption up to 80%.

BREAK THROUGH FATIGUE WITH ELEVATED PERFORMANCE /

EXO-T-22 Tool balancer

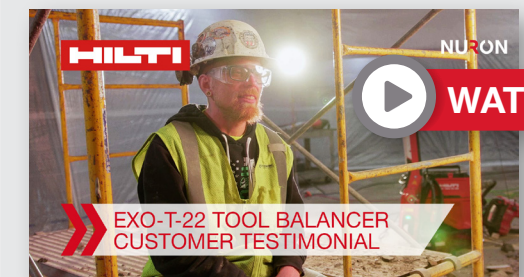
Elevate precision and help reduce fatigue with the new EXO-T-22 Tool balancer. Ergonomically designed and built for heavy demolition work, the EXO-T-22 helps eliminate fatigue and injury risks so you can optimize labor hours and productivity when using heavy breakers and combi-hammers.

With zero gravity handling, tools up to 37 pounds feel nearly weightless. Hilti prioritizes jobsite simplicity, safety, and productivity so you can achieve greater performance on the jobsite while reducing fatigue and risk of injury. Help extend your career and spend more time doing what you love, not recovering from work.

[REQUEST A DEMO](#)



UP TO 30%
FASTER
COMPLETION
OF STRENUOUS
TASKS



[WATCH VIDEO](#)

EXO-T-22 TOOL BALANCER
CUSTOMER TESTIMONIAL

See what
others
are saying

INCREASE FIRESTOP INSTALLATION SPEED AND ACCURACY

CFS-BTS Bottom Track Seal

Achieve jobsite readiness sooner with Hilti's new bottom of wall firestop solution, CFS-BTS Bottom Track Seal. This preformed firestop solution with XPLE technology helps protect against fire, smoke, and sound from bottom track and drywall to flat concrete slabs and metal deck without changing your track layout or framing process.

Using a preformed firestop product can save time and improve the quality control and accuracy of drywall installation without skilled labor. With more

cost-efficiency, nearly zero product waste, and simplified inspections, CFS-BTS helps increase productivity on the jobsite and keep your projects on schedule.



TOTAL WALL SOLUTION

Enhance productivity on the jobsite with a total preformed firestop solution for top-of-wall and bottom-of-wall applications when you use Hilti's existing CFS-TTS (MD) Top Track Seal with the new CFS-BTS Bottom Track Seal.



BOTTOM OF WALL FIRESTOP IN 4 EASY STEPS



STEP 1
Clean the surface



STEP 2
Reveal adhesive



STEP 3
Adhere to track



STEP 4
Set drywall board



**UP TO 3X FASTER
THAN TRADITIONAL
FIRESTOP SEALANTS**



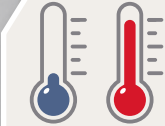
**APPROVED FOR
INSTALLATION IN
TEMPERATURES
AS LOW AS
14°F (-10°C)**

VISIBILITY WHERE IT MATTERS

PT-C Thermal camera

Stay vigilant on the job and gather crucial information quickly with the new PT-C Thermal camera. Designed to provide high precision and extreme temperature range, this thermal camera gives you the information you need to help make decisions on the job.

Making identification easier with the identical optical and thermal picture on a high-resolution screen allows you to check electrical components to cable connections with more accuracy. With connected features such as the USB-C for data transfer and built in microphone for voice notes, you can keep moving while recording what you need.



TEMPERATURE
RANGE
-4°F TO +1100°F



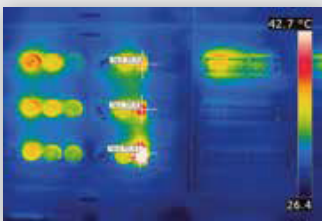
INFRARED
PICTURE
AND IDENTICAL
OPTICAL
PICTURE



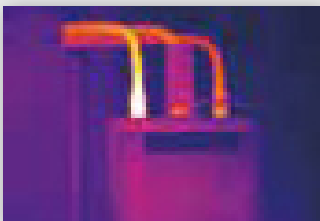
EXPORT
VOICE NOTES



Localization of heating
pipes and leaks



Check of electrical
components



Check of cable
connections



GET BACK TO WORK FASTER

High-performing tools and industry
leading repair services to match

Repairing and maintaining your tools shouldn't be hard, which is why our simplified and more convenient repair process is streamlined to get your tools back on the jobsite faster.

Providing you with a faster, less complicated repair experience, our repair process gives you seamless transparency from start to finish. Including online repair submissions as well as complimentary, next business day UPS pick-up for tools, you can stay informed through every step of the process.

LEARN MORE



ONE DAY TURNAROUND

In and out of the repair center in one day to help you avoid project delays or excessive administration and tool replacement costs.



EASIER PICKUP

Simply schedule a pickup for as early as the next business day from your office or warehouse location.



FAST TOOL EXCHANGE

Help minimize downtime by replacing eligible Fleet or in-Warranty items such as batteries, chargers, select power tools and accessories.



REPAIR TRANSPARENCY

Stay up to date on your repair with our new digital tracking — letting you know where your tool is 24/7.



SIW 10-22
3/4" Impact wrench

Smaller tool body that offers up to 85% more torque

SHOP NOW >



SIW 6AT-22
1/2" Impact wrench

Fasten with more reliability and streamline your workflow from start to finish

COMING SOON



SID 8-22
7/16" Impact driver

Achieve high-speed drilling and fastening with extended runtime, powered by Nuron

SHOP NOW >



SF 10W-22
Drill driver

Drill large holes into wood and metal with 4 speeds and more ease

SHOP NOW >



TE-CX 5
Drill bit

Drill up to 30% faster when you pair your Hilti drill and drill bit

SHOP NOW >



TE 50-22
Rotary hammer

Up to 60% more work per charge on the Nuron platform

SHOP NOW >



SBT 6-22
Drill and set system

Drill the pilot hole, set the stud, and tighten the nut or grating disk with one-tool installation

SHOP NOW >



DST 10-CA
Wall saw

Cuts with less effort through 21" of concrete with the systems' 48" blade

SHOP NOW >



DST 20-CA
Wall saw

This 62" blade diameter wall saw delivers high horsepower and versatility

COMING SOON



SPX-L X-CHANGE
MODULE

Diamond core bit
Carries the equivalent of five core bits with one barrel

SHOP NOW >



EXO-T-22
Tool balancer

Help reduce fatigue and risk of injury when using heavy breakers and combi-hammers

SHOP NOW >



CFS-BTS
Bottom Track Seal

Up to 3x faster than traditional firestop sealants

SHOP NOW >



PT-C
Thermal camera

High percison and extreme temperature range to gather crucial information quickly

SHOP NOW >



SC 6WP-22
Circular saw

Precision plunge circular saw with high dust capture rate for clean and controlled, straight cuts in wood

COMING SOON



RECIPROCATING
SAW BLADES

Tool insert
Economical bimetal blades optimized for cutting thin metal plate, heavy pipes, metal structures etc.

SHOP NOW >



CHOP SAW
**ABRASIVE
BLADES 14"**

Tool insert
Standard-class abrasive disc for cutting drywall stud using chop saws

SHOP NOW >

SHOP THE
LATEST
INNOVATIONS
FROM THIS
ISSUE



Hilti, Inc.
1-800-879-8000
www.hilti.com

Servicio al Cliente
en español
1-800-879-5000