

SPECTRUM 6040 DV

X-RAY SCANNER

160 kV | 180 kV



The Spectrum 6040 DV has a robust design and the highest quality of image on the market is approved to operate in international airports. Specifically designed to meet the needs and applications that demand high inspection and image quality, such as airports, prisons, railways and subways, stadiums, courts, ordering services or where high security is required. The Spectrum 6040 DV offers a state-of-art high power x-ray generator (180kV) that meets the highest image quality and penetration requirements for even faster and more efficient inspection. With the Smallest footprint of 6040 dual view on the market, Spectrum 6040 DV has established itself as an efficient inspection system when it comes to use in all areas even if it is a restricted or confined area.



TECHNICAL SPECIFICATIONS

HIGH TECH

- High image quality with a wire resolution of 40 AWG and steel penetration of 42 mm (160kV), 44mm (180kV).
- Meets all the international standards for health and safety of operators and members of the public.



Excellent image quality. Organic materials shown in orange, metal in blue and a mix of them in green.

- Drugs and explosives automatic detection and alarm.
- Random projection of images containing fictitious threat objects for operator skills training (TIP function).
- Continuous or region zoom functions for easy and precise evaluation of the image.
- Can export images in commercial file formats (JPEG, TIFF and BMP) onto a USB device.



Drug detection

- Ergonomic keyboard and simple operator interface provide efficiency and ease for the operator.
- Hardware and software customized to meet customer requirements.

GENERAL SPECIFICATIONS

• Tunnel Size	618mm (W) / 425mm (H)
• Conveyor Speed	0,24m/s (configurable)
• Conveyor Height	669mm
• Max Load	150kg
	200kg (heavy duty roller optional)
• Standard Generator	Dual 160 kV operating at 150 kV
• High Power Generator	Dual 180kV operating at 170 kV
• Wire Resolution*	40AWG
• Steel Penetration*	40mm (160kV)
	44mm (180kV)
• Display Monitor	2 LED, color, high-resolution (configurable size)
• Cooling	Insulating oil with forced air cooling
• Beam direction	Diagonally upward and sideward

STANDARD FEATURES

• Automatic color coding of materials with different atomic numbers.	• Export to a secure VMI encrypted viewing application
• Image auto save	• Network connection
• Baggage Counter	• Scanning in real time
• Continuous scanning	• Bidirectional inspection
• Zoom higher than 128x	• Self diagnostic system
• Colored or black/white image	• Color Inversion
• Edge enhancement	• Image manipulation in real time
• High penetration function	• Automatic detection algorithm for drugs, explosives and high density materials
• Sharpness enhancement	• Storage capacity above 200,000 images
• Threat image projection (TIP)	• L-shaped array detectors
• High density alert	
• Image export to JPEG, TIFF and BMP	

SECURITY

• Shield	Dose lower than 1uSv/h at 0.1m away from the equipment
----------------	--

OPTIONAL FUNCTIONS AND ACCESSORIES

• Customized painting	• Tunnel extension
• Training Software	• Touch screen monitor
• Local language	• Ability to integrate with conveyor system
• Remote workstation	• WiFi capability
• Standard ASTM or STP test piece	• Integration with Garrett's walk-through metal detector portals
• Modular roller table	
• Anti-theft operation console with key	
• Uninterruptible Power Supply	
• Remote workstation software (Spectrum Ativa)	



GENERAL INFORMATION

• Operating Temperature/ Humidity	0°C - 40°C / 5% ~ 95% (non-condensing)
• Storage Temperature/ Humidity	-40°C - 60°C / 5% ~ 95% (non-condensing)
• Power Supply	127Vac / 220Vac / 230Vac (-15% +10%); 50Hz/60Hz, +/-3Hz
• Dimensions	1980mm (L) 1147mm (W) 1240mm (H)
• Weight	623kg
• Power Consumption	1kVA

* According to VMI test piece

"Technical Specifications subject to change without notice."

VMI Security

Av. Hum, 55 - Distrito Industrial Genesco Aparecido de Oliveira
Lagoa Santa / MG - Brazil - ZIP CODE 33400-000

Phone: +55 (31) 3622-0470 / 3622-0124



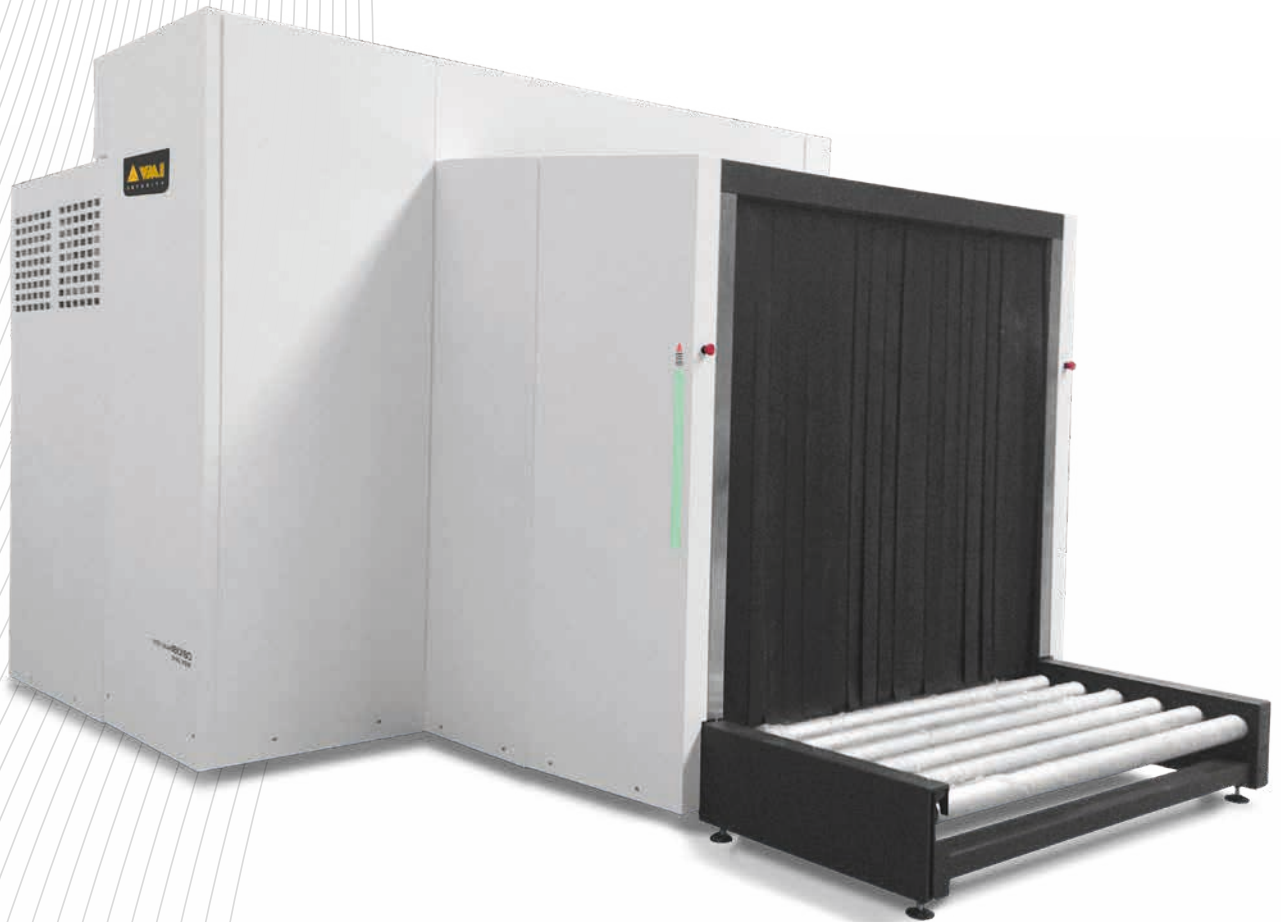
X-RAY SCANNERS

contact@vmisecurity.com

SPECTRUM 180180 DV

X-RAY SCANNER

200 kV | 320 kV



The Spectrum 180180 DV, is an x-ray inspection system with a high level of performance, greater sharpness and image quality. It has been specially designed to meet the needs and applications of airports, customs services, transportation services, carriers, transportation operations or in any other environment where high security and complete screening is required.

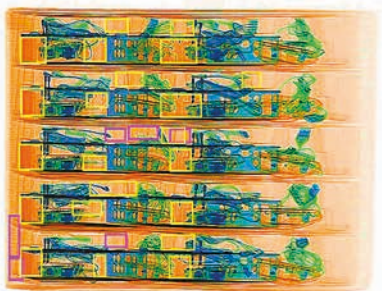
Spectrum 180180 DV has the best cost-effective benefit on the market of large size scanners, for inspection of large volumes and palletized loads that positioned it to be certified by international airports. With Dual View technology that permits precise identification of the cargo's content in a single pass.



TECHNICAL SPECIFICATIONS

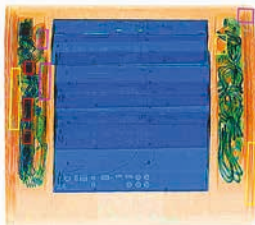
HIGH TECH

- High image quality with a wire resolution of 36 AWG and steel penetration of 48 mm (200kV) 70 mm (320kV).
- Meets all the international standards for health and safety of operators and members of the public.



Excellent image quality. Organic materials shown in orange, metal in blue and a mix of them in green.

- Drugs and explosives automatic detection and alarm.
- Random projection of images containing fictitious threat objects for operator skills training (TIP function).
- Continuous or region zoom functions for easy and precise evaluation of the image.
- Can export images in commercial file formats (JPEG, TIFF and BMP) onto a USB device.



Drug detection

- Ergonomic keyboard and simple operator interface provide efficiency and ease for the operator.
- Hardware and software customized to meet customer requirements.

GENERAL SPECIFICATIONS

• Tunnel Size	1852mm (W) / 1805mm (H)
• Conveyor Speed	0,20m/s (configurable)
• Conveyor Height	340mm
• Max Load	3000kg
• Standard Generator	200kV
• High Power Generator	320kV
• Wire Resolution*	36AWG
• Steel Penetration*	48mm (200kV), 70mm (320kV)
• Display Monitor	2 LED, color, high-resolution (configurable size)
• Cooling	Insulating oil with forced air cooling
• Beam direction	Diagonally downward and sideward

STANDARD FEATURES

• Automatic color coding of materials with different atomic numbers.	• Color Inversion
• Image auto save	• Image manipulation in real time
• Baggage Counter	• Automatic detection algorithm for drugs, explosives and high density materials
• Continuous scanning	• Storage capacity above 200,000 images
• Zoom higher than 128x	
• Colored or black/white image	
• Edge enhancement	
• High penetration function	
• Sharpness enhancement	
• Threat image projection (TIP)	
• High density alert	
• Image export to JPEG, TIFF and BMP	
• Export to a secure VMI encrypted viewing application	
• Network connection	
• Scanning in real time	
• Self diagnostic system	



SECURITY

• Shield	Dose lower than 1uSv/h at 0.1m away from the equipment
----------------	--

OPTIONAL FUNCTIONS AND ACCESSORIES

• Customized painting	• Ability to integrate with conveyor system
• Training Software	• Image viewer software for computer based PC
• Local language	• Operator training software
• Remote workstation	• Wireless connection
• Standard ASTM or STP test piece	• Barcode reader
• Modular roller table	
• Anti-theft operation console with key	
• Uninterruptible Power Supply	
• Remote workstation software (Spectrum Ativa)	
• Tunnel extension	
• Touch screen monitor	



GENERAL INFORMATION

• Dimensions	6641mm (L), 3301mm (W), 2778mm (H)
• Weight	5450kg
• Power Consumption	3.5kVA (200kV), 5kVA (320kV)
• Operating Temperature/ Humidity	0°C ~ 40°C / 5% ~ 95% (non-condensing)
• Storage Temperature/ Humidity	-40°C ~ 60°C / 5% ~ 95% (non-condensing)
• Power Supply	220Vac / 230Vac (-15% ~ +10%); 50Hz/60Hz, +/-3Hz

* According to VMI test piece

"Technical Specifications subject to change without notice."

VMI Security

Av. Hum, 55 - Distrito Industrial Genesco Aparecido de Oliveira
Lagoa Santa / MG - Brazil - ZIP CODE 33400-000

Phone: +55 (31) 3622-0470 / 3622-0124



X-RAY SCANNERS

contact@vmisecurity.com



The Spectrum 150180 DV has been specially designed to meet the needs and applications of warehouses, carriers, forwarders and couriers for airports.

Dual view technology providing a horizontal and vertical image or view of the inspected objects, which will efficiently and effectively increase the throughput of the process of inspection with precision.



TECHNICAL SPECIFICATIONS

HIGH TECH

- High image quality with a wire resolution of 36 AWG and steel penetration of 49 mm.
- Meets all the international standards for health and safety of operators and members of the public.



Excellent image quality. Organic materials shown in orange, metal in blue and a mix of them in green.

- Drugs and explosives automatic detection and alarm.
- Random projection of images containing fictitious threat objects for operator skills training (TIP function).
- Continuous or region zoom functions for easy and precise evaluation of the image.
- Can export images in commercial file formats (JPEG, TIFF and BMP) onto a USB device.



Drug detection

- Ergonomic keyboard and simple operator interface provide efficiency and ease for the operator.
- Hardware and software customized to meet customer requirements.

GENERAL SPECIFICATIONS

• Tunnel Size	1550mm (W) / 1805mm (H)
• Conveyor Speed	0,20m/s (configurable)
• Conveyor Height	340mm
• Max Load	3000kg
• Standard Generator	200kV (configurable)
• Wire Resolution*	36AWG
• Steel Penetration*	49mm
• Display Monitor	2 LED, color, high-resolution (configurable size)
• Cooling	Insulating oil with forced air cooling
• Beam direction	Diagonally sideward and downward

STANDARD FEATURES

• Automatic color coding of materials with different atomic numbers.	• Self diagnostic system
• Image auto save	• Color Inversion
• Baggage Counter	• Image manipulation in real time
• Continuous scanning	• Automatic detection algorithm for drugs, explosives and high density materials
• Zoom higher than 128x	• Storage capacity above 200,000 images
• Colored or black/white image	
• Edge enhancement	
• High penetration function	
• Sharpness enhancement	
• Threat image projection (TIP)	
• High density alert	
• Image export to JPEG, TIFF and BMP	
• Export to a secure VMI encrypted viewing application	
• Network connection	
• Scanning in real time	
• Bidirectional inspection	



SECURITY

• Shield	Dose lower than 1uSv/h at 0.1m away from the equipment
----------------	--

OPTIONAL FUNCTIONS AND ACCESSORIES

• Customized painting	• Tunnel extension
• Training Software	• Touch screen monitor
• Local language	• Ability to integrate with conveyor system
• Remote workstation	• WiFi capability
• Standard ASTM or STP test piece	• Integration with Garrett's walk-through metal detector portals
• Modular roller table	
• Anti-theft operation console with key	
• Uninterruptible Power Supply	
• Remote workstation software (Spectrum Ativa)	



GENERAL INFORMATION

	Dual View
• Dimensions	7100mm (L), 2970mm (W), 3000mm (H)
• Weight	3000kg
• Operating Temperature/ Humidity	0°C ~ 40°C / 5% ~ 95% (non-condensing)
• Storage Temperature/ Humidity	-40°C ~ 60°C / 5% ~ 95% (non-condensing)
• Power Supply	127Vac / 220Vac 230Vac (-15% ~ +10%); 50Hz/60Hz, +/-3Hz
• Power Consumption	2.5kVA

* According to VMI test piece

"Technical Specifications subject to change without notice."

VMI Security

Av. Hum, 55 - Distrito Industrial Genesco Aparecido de Oliveira
Lagoa Santa / MG - Brazil - ZIP CODE 33400-000

Phone: +55 (31) 3622-0470 / 3622-0124



X-RAY SCANNERS

contact@vmisecurity.com

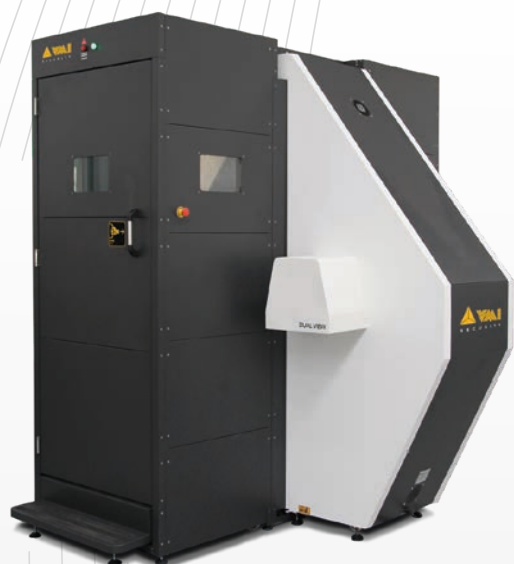


For a safer world

SPECTRUM BODYSCAN DV

COMPLETE SECURITY SYSTEM BODY SCAN DV

170 kV



The SPECTRUM BODYSCAN DV is capable of providing the highest level of safety in accordance with the requirements for prisons, airports, border venues and government facilities. Designed with the latest technology, the low dose X-rays combined with the scan time of only 7 seconds, provides excellent detection for dangerous and illegal objects such as weapons, phones, liquids, explosives, drugs, wires and plastics.



TECHNICAL SPECIFICATION

X-ray image properties

- Dimension of inspection channel (h x w) 82,52 in (2096mm) X 27,48 in (698mm)

Scanning Process

- Carrier type: Conveyor belt
- Scanning time 7 seconds
- Load capacity: 600 lbs (272kg)

X-ray generator (whole body and abdomen image)

- Anode Voltage in Operation:..... 170kV
- Wire resolution:..... 38AWG
- X-ray detectors: Whole body and abdomen
- Displays: 24" for full body and 18" for abdomen
High resolution LCD monitor

Dose per Inspection:

- Dual View mode: 0.5 to 4.0 μ Sv (fully adjustable)

Radiation Safety

- For full body and abdomen
- Integrated dosimeter (optional)
- Intercom between the operator and the Individual inspected (optional)
- Visual signal when the scanner is on and when there is inspection going on and x-ray being emitted
- Emergency button that can be activated by the inspected person
- Console with key and emergency button for activation of equipment by the operator
- Shielded cabin as an optional, by installing it to the unit the maximum x-ray leakage 3,94 in (10cm) away from the unit is going to be <1 μ Sv/h (ideal for confined and restricted areas)

Database Features

- Warns the operator if the inspected person exceeded the number of acceptable scans or dosage limits
- Secure login password to operate the equipment
- Image ID: Identity of the person being inspected
- Automatic control of the accumulated dose for each individual inspected
- Automatic capture photo / video of the person being scanned (with optional video camera)
- Registration system for inspected person
- Biometry
- Database integration with other systems in one network (optional)
- Automated Backup and Recover

Image processing features

- Zoom / Pan
- Auto Contrast adjustment
- Correction range
- Edge enhancement
- Control brightness and contrast
- Reverse Black / White
- Image Export
- Printing images
- Enables scan of the entire body including the shoe soles

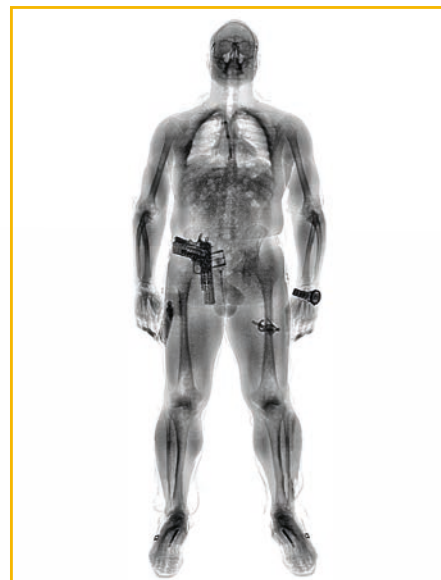
Dimensions

	without cab.	with cab.
• Length:	111.42 in (2830mm)	111.81 in (2840mm)
• Width:	78 in (1981mm)	80.59 in (2047mm)
• Height:	100.04 in (2541mm)	102.48 in (2603mm)
• Weight:	2174,86 in (986,5kg)	4025,641 (1826kg)
• Voltage:	127/220VAC, single phase, 50/60 Hz, phase, neutral and ground	
• Power:	1kVA	
• Operating temperature:	0 to 50°C 5% to 95% noncondensing	
• Storage temperature and humidity:	-40°C to 60°C / 5% to 95% noncondensing	

*Complies with the ANSI/HPS N43.17-2009 standard.

Inspection Secured System

The **SPECTRUM BODYSCAN DV** is based on the principle that the person is inspected by a very low intensity X-ray transmission system. This is the only technology that can be used to inspect personnel with the ability to detect objects hidden inside or outside the body.

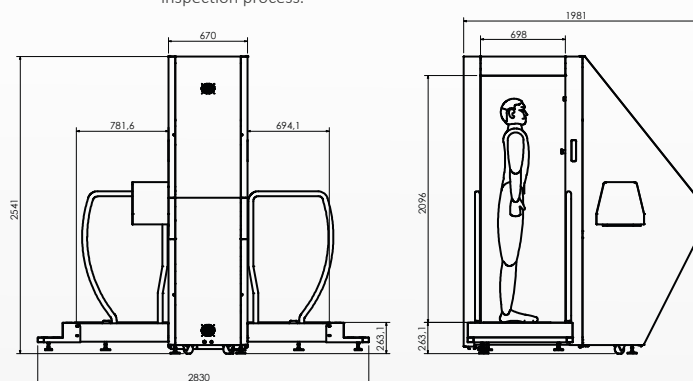


The **SPECTRUM BODYSCAN** is available in different models which offer an exceptional level of detection, safety and efficiency.

The **SPECTRUM BODYSCAN** provides complete security for protection of establishments such as airports, ports, railway stations, prisons, embassies, gold mines/diamonds and government buildings.



SPECTRUM BODYSCAN DV offers two images, the double vision technology delivers higher image quality, especially in the area of the abdomen, increasing reliability in the inspection process.



"Technical Specifications subject to change without notice."

VMI Security

1101 Brickell Avenue, South Tower, 8th Floor*
Miami, Florida 33131
Phone: +1 305 779-5692

X-RAY SCANNERS

contact@vmisecurity.com