



Global Environmental Products Inc. offers equipment with uncompromising performance, consistent quality, durability and reliability. Our comprehensive range of machines provide the right cleaning equipment for your application.

Please contact us for a demonstration at (909) 713-1600.

- ▶ Reliable / Durable Equipment
- ▶ Innovative Engineering / Design
- ▶ Industry Leading Reputation
- ▶ Dedicated Customer Service
- ▶ Outstanding Sales Professionals
- ▶ Fast Parts and Service
- ▶ National Dealer Network

www.Globalsweeper.com

MADE IN THE USA



Sold and Serviced by:



Global Environmental Products
5405 Industrial Parkway
San Bernardino, CA 92407 USA
909-713-1600
info@globalsweeper.com

Additional Options Available:

CATCH BASIN/WANDER HOSE

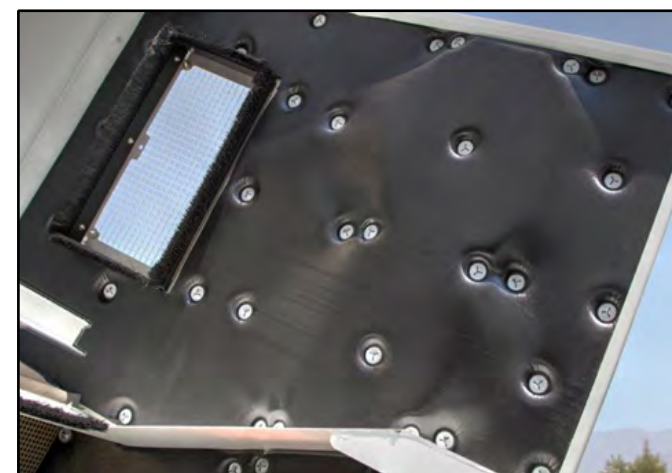


available with... **PNEUMATIC SUPPORT**

The robust rear-mounted suction system provides additional vacuum where you need it, such as emptying gullies and waste bins. With the pneumatically support carrier arm, the suction system can be moved effortlessly through the entire working area range, with air-adjustable raise/lower controls.

SILENT PLUS PACKAGE

The "Silent Plus" option utilizes sound suppressive material in the engine compartment effectively reducing noise pollution during sweeping to 87 dB(A).



QUIET SWEEPING OPERATION



GLOBAL V6^{AIR}



GLOBAL V6^{AIR}

The Ultimate Air Sweeper

- ▶ Reliable / Durable Equipment
- ▶ Innovative Engineering / Design
- ▶ Industry Leading Reputation
- ▶ Dedicated Customer Service
- ▶ Outstanding Sales Professionals
- ▶ Fast Parts and Service
- ▶ National Dealer Network

Powerful, Quiet and Simple

POWERFUL SUCTION FAN



ALL COMES DOWN TO POWER

Inclined suction fan provides optimum volume flow and improved suction power.

QUALITY, BUILT TO LAST



STAINLESS STEEL CONSTRUCTION

High quality materials such as 304 Grade Stainless Steel are integrated into the 8.5 Cu.Yd. Hopper.

INCREASED WATER CAPACITY



The twin water tanks provide a total tank capacity of **500 gal. of water**. The primary fiber glass tank is fixed directly onto the sub frame under the hopper. The secondary tank, also made of fiber glass, is mounted in between fan and cab, providing additional noise protection. **SWEEP ALL DAY!**

THE ULTIMATE “AIR RECIRCULATION” Street Sweeper

The air recycling system constantly recirculates the air from the sweeper to the suction box. Only a small percentage of the air passes into the atmosphere. Depending on the operational scenario, the recycled air volume can be adjusted in between 30% - 70%. All the adjustments can be completed by the operator adjusting a lever. **The fine dust emission from a Global V6 sweeper is 50% less than that of a pure vacuum concept.**



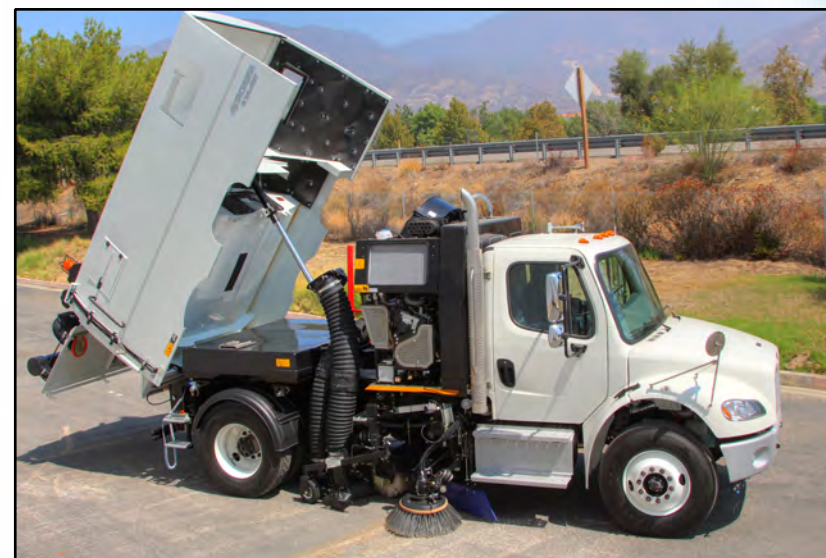
Minimal amount of dust is expelled into the working area at the rear and around the sweeper. Additional dust control is achieved by adding water to the recycled air. In winter the **Global V6** can operate at temperatures as low as 23 °F, due to the re-circulating air in the system being warmed to 59 °F, thus preventing the water in the suction tube and hopper from freezing.

UNEVEN GROUND ...



AND IT'S ALL SWEEPED

The nozzle is suspended so as to oscillate - around its center of gravity, which allows for adjustment to every bump on the sweeping surface. Contact pressure can be easily adjusted, to ensure that every type of surface is swept.

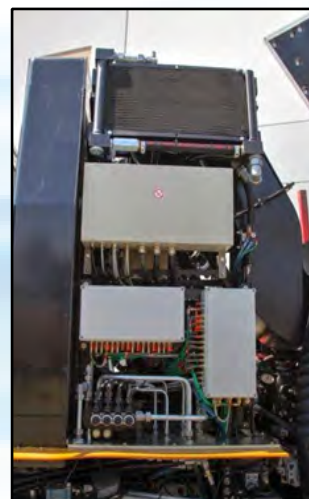


EVERYTHING AT A GLANCE



The **Global V6** includes central operating panel and easy access to all the functions, while large digital display provides all the necessary information to the operator.

EASY SERVICE & MAINTENANCE



All valves and adjustments for the electrical, pneumatic, and hydraulic systems are located in one central console, which is maintenance -friendly and protects against water and dust.

MODERN DRIVE CONCEPTS

The **Global V6** is designed with **ECO** friendly features. We are proud to say that our Auxiliary engine provides lowest fuel consumption and lowest noise levels compared to competitive units during sweeping.



Global V6 STANDARD sweeping package includes **Tier 4 Final 2.0L 74hp** Diesel engine with a fuel consumption of **1.5 gallons per hour.**

THE “V-NOZZLE” WILL SWEEP IT ALL



The **V-shaped Suction Nozzle** with its large aperture, made of 4 mm steel, conveys the swept material directly into the suction tube. This design enables the **Global V6** to lift the Heaviest of debris in any application.

THE POWER BRUSH



The channel brush or main transfer broom is mounted as a trailed brush and suspended separately from the suction nozzle. It is equipped with lateral shock absorbers and ground pressure adjustment in order to pick up heavy dirt off the road surface. **The pneumatically controlled adjustment of the main transfer broom offers the best possible performance in every working condition.**

Powerful, Quiet and Simple

© Copyright 2015, Global Environmental Products, Inc. • Specifications may change without notice.

MADE IN THE USA

