

CONTACT INFORMATION FOR: ICM of Oklahoma City
Website: <http://www.improvedconstructionmethods.com>

Company Name	ICM of Oklahoma City
Doing Business as (if applicable)	
Contact Person for Solicitation Response	Pat White
Phone	405-235-2609
Email	pwhite@icminc.us
Address For Purchase Orders-Number & Street-Post Office Box (some companies have ordering addresses that are different than the payment address)	4127 W Reno Ave
City, State, Zip	Oklahoma City, OK 73107
Contact Person for Contract/Ordering/Price Information	Pat White
Phone	405-235-2609
Fax	405-235-2610
Email	pwhite@icminc.us
Secondary Contact for Contract/Ordering	
Phone	
Fax	
Email	
Address For Payment-Number & Street-Post Office Box (some companies have a different Payment/remittance address than the ordering address)	1040 N Redmond Rd
City, State, Zip	Jacksonville, AR 72076
Contact Person/Department for payment	Lucy Fitts
Phone	800-877-4571
Fax	405-235-2610
Email	405-982-9794
Payment Discount (i.e. 15 days)	Net _30_ days
Supplier will be responsible for notifying the contracting officer when the contact information changes for ordering and payment.	Notes: (Special ordering instructions-please attach any special instructions on a separate sheet)

ATTACHMENT E

Sewer Inspection Equipment

If you have different discounts for different sizes of equipment or options, you **WILL** have to list the items. If you need more space, attach sheets in the same format as this

BRAND	MODEL	Price Book/Catalog Date of Manufacturer's Current Published Retail Price List	Percentage off discount _____ %
UEMSI	Eagle cam		10%
UEMSI	PROCAM DVR		10%
UEMSI	PORTABLE MAIN		
UEMSI	LINE SYSTEM		10%
UEMSI	JET CAM		10%

Attachments/Accessories: 10 _____ %

Options: 10 _____ %

Installation Charge: _____

Special Notes: _____

ProCam[®] DVR

Color Mini Camera Inspection System with DVR Player/Recorder

The ProCam[®] DVR by UEMSI[®], is an extremely compact and lightweight mini camera system you can't live without. Having the same high quality standards and durability you have come to expect from UEMSI, the ProCam DVR system is setting the new standard of the industry. It incorporates the latest technology, which includes a 10.4" color LCD monitor and a DVR player / recorder that records directly to an SD card. This equipment is housed in a heavy-duty case, with a total weight of only 17 pounds. The ProCam DVR system not only operates on both 110 VAC and 12 VDC, but also has a rechargeable battery pack option available. The system is designed for inspecting sewer pipelines, HVAC ducts, chimneys and other enclosed cavities.

Standard with the ProCam DVR system is UEMSI's proven multi-conductor, nylon-jacketed video push cable. It is the strongest in the industry enabling the user to push long runs, yet flexible to handle tight corners in small pipe. The cable also includes a water-blocking gel inside to prevent water infiltration, if it were to become damaged.

ProCam DVR: It is equipped with our interchangeable, 1.4" OD x 2" L, CM-1 color camera head, as well as the standard features listed below.

ProCam DVR Ultra: It is equipped with everything the ProCam DVR has, plus the Data Display I package.

Upgrade Options:

Pro Eye Self-Leveling Color Camera Head:

The Pro Eye self-leveling camera head automatically keeps the picture upright, and is available on both the ProCam DVR and DVR Ultra. It is 1.67" OD x 2.375" L and has 21 white LEDs.

CH-3 Color Camera Head: The CH-3 camera head is used for televising larger pipelines, and is available on both the ProCam DVR and DVR Ultra. It is 2.25" OD x 3" L and has 12 high-output LEDs.

Data Display I Package: This package includes a mini-keyboard to add on-screen text, and an on-screen digital footage counter. Footage is accurately measured using a measure wheel instead of being calculated by reel revolution. This package is standard on the ProCam DVR Ultra.



The ProCam DVR Ultra system is shown with standard features including reel w/ 200' of video push cable, CM-1 color camera head and Data Display I package w/ keyboard.

STANDARD FEATURES

- 10.4" color LCD monitor
- DVR player / recorder that records directly to an SD card, which can be given directly to the end customer after recording, and/or downloaded to your computer for storage
- Hand held microphone
- Variable light intensity
- Snap-on sun shield
- Video and audio output RCA connections
- Power control unit only weighs 17 lbs.
- 200' of video push cable with water-blocking gel, and a nylon jacket
- Capable of inspecting a minimum of 2" straight pipe
- Cable reel constructed of lightweight, heavy-duty steel tubing
- Lightweight and durable aluminum camera housing
- 4" - 6" Brush skid
- 110 VAC or 12 VDC operation

UEMSI[®]

PIPELINE CLEANING & INSPECTION EQUIPMENT

Corporate Office: 800.666.0766 / 262.783.6666

Fax: 800.691.0031 / 262.783.4860

Website: www.uemsi.com / E-mail: info@uemsi.com

SPECIFICATIONS

REEL ASSEMBLY

- Durable steel construction
- Maintenance-free slip ring
- Rugged wheels for easy mobility
- Fiberglass rod imbedded in video cable for rigidity
- 4" flexible spring for easy bend negotiation
- Reel dimensions: 34" H x 14" W x 30" L
- Reel weight w/ 200' of cable: 49 lbs.
- Hand brake prevents reel from turning during transport
- EZ Termination for faster field service
- Cable Quick Disconnect for easy cable replacement

CM-1 COLOR CAMERA HEAD

- Video output: 1.0 V p-p NTSC standard, 75 ohm
- Imaging device: 2 lux solid state
- 2:1 interlace scanning
- Scan frequency: 15.734 KHz; 59.9 Hz
- 300,000 pixels
- 460 lines (h) resolution
- 100° lens, 2.5 mm, f 1.8
- Power: 12 VDC
- O-Ring sealed aluminum housing
- Equipped with 15 white LEDs
- Variable light output
- Lighthead housing: High strength, clear polycarbonate
- Camera dimensions: 1.4" OD x 2" L
- Camera weight: 3 oz.

POWER CONTROL UNIT

- Rugged, lightweight, easy-to-carry briefcase-style power control unit case
- Hinged lid with built-in storage compartment
- Power indicator LED
- Complete monitor and camera controls with variable light intensity
- 10.4" color LCD monitor
- DVR player / recorder that records directly to an SD card
- Snap-on sun shield
- Video and audio output connections
- Light head power supply: 0-12 VDC
- Case dimensions: 5.375" H x 14.25" W x 16.375" L
- Weight: 17 lbs.

OPTIONS



PRO EYE SELF-LEVELING
COLOR CAMERA HEAD



6"-15" CENTERING SKIDS
ROLLER SKID [LEFT],
BRUSH SKID [MIDDLE],
ALUMINUM SKID [RIGHT]



CH-3 COLOR
CAMERA HEAD



TRACKER™ IN-LINE
TRANSMITTER



TRACKER™ II
LOCATING RECEIVER



MINI REEL



AC BATTERY PACK KIT

OPTIONS NOT PICTURED

- 250' , 300' , 400' and 500' Cable Lengths
- Data Display I Package



★ Specifications are subject to change. ★

PORTABLE MAINLINE SYSTEM

Today's customer requires a camera system that will grow as the company grows. After all, it is an investment, not only for the present, but also the future.

Mainline inspections are easily conducted when the Predator Advantage™ PCU is paired with a portable mainline reel and a transporter.

The Predator Advantage PCU features the following built-in controls: color LCD monitor, DVR player/recorder, interchangeable lighthead control, tractor control, connection for the Explorer™ Zoom pan & tilt camera remote control and a microphone jack.

Created to do the work of many different units, the UEMSI® Predator Advantage is the only system you will ever need.



The Predator Advantage Portable Mainline System. Pictured with the PCU is the portable mainline reel, aluminum manhole roller, Tyger Tail® cable guide hose, Prowler™ transporter, Explorer™ Zoom pan & tilt camera with plug-in remote, and viewing box.

STANDARD FEATURES

- 10.4" color LCD monitor
- Built-in DVR that records directly to an SD card, which can be given directly to the end customer after recording, and/or downloaded to your computer for storage
- Data Display II system with digital on-screen footage and keyboard
- Heavy-duty portable mainline reel with power rewind and auto levelwind
- Prowler wheeled transporter
- Explorer Zoom pan & tilt camera
- Wired hand-held remote control for camera and tractor
- Aluminum manhole roller
- Tyger Tail® cable guide hose
- Glare-reducing viewing box



Predator Advantage™ PCU with DVR Player/Recorder.

OPTIONS

- 600' & 1000' Lengths of Fiber Armor Cable
- Trax Jr.™ Transporter
- Laptop Computer
- Pipeline Inspection Software

UEMSI®

PIPELINE CLEANING & INSPECTION EQUIPMENT

Corporate Office: 800.666.0766 / 262.783.6666

Fax: 800.691.0031 / 262.783.4860

Website: www.uemsi.com / E-mail: info@uemsi.com

KIT SYSTEM™

Color Mainline Inspection System

If you want a new pipeline televising truck but are on a budget, then the UEMSI® Kit System™ is for you. UEMSI will supply the major electrical and mechanical components, while you provide the vehicle, cabinetry and labor. YOUR SAVINGS WILL BE SIGNIFICANT.

The Kit System was designed with your specific needs in mind. The standard package consists of a power control unit, mainline reel with 1,000' of cable and controller, zoom pan & tilt camera, tractor and much more. This package can also be customized with more or less equipment to fit your own application. Available options include the Prowler™ wheeled transporter for televising large pipe, pipeline inspection software, a rack mount or laptop computer, and more.

If you have a generator capable of putting out 2,600 watts of power, and the space needed for both an equipment and control room, the Kit System is the best buy on the market for your needs.

For more information, call a UEMSI representative near you.



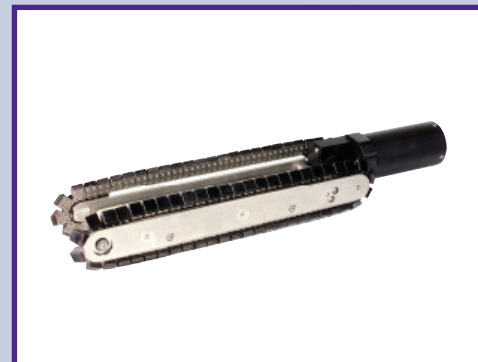
Engineering Rack with Components



Explorer™ Zoom Pan & Tilt Camera



Mainline Reel



Trax Jr.™ Transporter



Explorer™ Zoom Wired Remote Control



UEMSI is a proud distributor of Yamaha® generators.



Shown above is a van control room with a Kit System engineering rack and components.



Shown above is the mainline reel, Explorer™ Zoom pan & tilt camera, and the Trax Jr.™ tractor.

UEMSI®

PIPELINE CLEANING & INSPECTION EQUIPMENT

Corporate Office: 800.666.0766 / 262.783.6666

Fax: 800.691.0031 / 262.783.4860

Website: www.uemsi.com / E-mail: info@uemsi.com

STANDARD KIT SYSTEM

- Engineering rack, including:
 - Engineering panel
 - DVD player / recorder and VCR
 - Power Control Unit (PCU)
 - Reel / winch control
- 15" color LCD monitor
- Data Display II system
- Mainline reel with 1,000' of cable
- 15' test cable
- Explorer™ Zoom pan & tilt camera w/ wired hand held remote control
- Trax Jr.™ tractor for 6" - 15" pipe
- Circuit breaker box and circuit breakers
- Outdoor shore power plug
- 20' shore power cord
- Necessary connection cables
- Tool kit
- Tyger Tail® cable guide hose
- Aluminum top manhole roller assembly with nylon roller
- Pole retrieval tool for Trax Jr. tractor



Prowler Wheeled Transporter



Low Profile Lighthead



Dual High Performance
Lighthead

ADDITIONAL OPTIONS NOT SHOWN

- 18"-30" Trax Jr. expansion kit
- Pipeline inspection software
- Rack mount computer
- Laptop computer
- Yamaha® generators
- Interface converter for push camera use

Financing available. Specifications are subject to change.

Yamaha® is a registered trademark of Yamaha Motor Corporation, U.S.A.

UEMSI®

PIPELINE CLEANING & INSPECTION EQUIPMENT

Corporate Office: 800.666.0766 / 262.783.6666

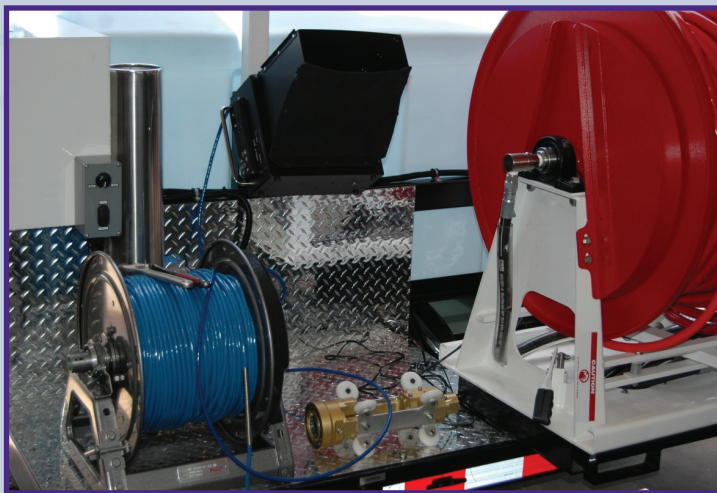
Fax: 800.691.0031 / 262.783.4860

Website: www.uemsi.com / E-mail: info@uemsi.com

JETCAM™

Color Sewer Jetter Inspection System

The Jet Cam system from UEMSI®, is American made and is designed to work with any style sewer jetter or combination machine, whether it is a trailer mount or a truck mount unit. It enables the user to inspect the pipe while doing the cleaning, and because of this ability the user can immediately determine if the pipe needs further evaluation or repair.



UEMSI Jet Cam system as shown on a U.S. Jetting® Jet Trailer. The Jet Trailer is not included.

STANDARD FEATURES

- 10.4" color LCD monitor
- Built-in DVR, which records to an SD card
- AC/DC operation
- Variable controlled light intensity on camera and external lighthead
- Video and audio output connections
- 40" interface cable
- 600' of flexible video cable
- Heavy-duty reel with electric rewind motor and controller
- Electrical slip ring assembly
- Nozzle assembly with camera adapter
- Pro Eye self-leveling color camera
- Auxiliary lighthead, which supplies enough light for pipe through 27"
- 6", 8"-10", and 12" skid assemblies
- Dual Tyger-tail cable guide assembly

Upgrade Option:

Data Display I Package: This package includes a mini-keyboard to add on-screen text, and an on-screen digital footage counter. Footage is accurately measured using a measure wheel instead of being calculated by reel revolution. This package is standard on the Jet Cam Ultra.

The Nozzle Body Assembly includes a special nozzle that houses the Pro Eye self-leveling color camera and the auxiliary lighthead. The system has enough light to televise up to 27" pipe, because of the high powered LEDs. A variety of skid sizes are included with this system. The nozzle jets are specifically drilled for the proper GPM and PSI of the users' jetter. (Shown on back)

UEMSI®

PIPELINE CLEANING & INSPECTION EQUIPMENT

Corporate Office: 800.666.0766 / 262.783.6666

Fax: 800.691.0031 / 262.783.4860

Website: www.uemsi.com / E-mail: info@uemsi.com



The Jet Cam Nozzle Body Assembly, showcasing the UEMSI Pro Eye self-leveling camera.



The Jet Cam PCU has a 10.4" color LCD monitor and a built-in DVR, which records to an SD card.



The UEMSI Jet Cam Ultra system equipment package.

★ Specifications are subject to change. ★

UEMSI®

PIPELINE CLEANING & INSPECTION EQUIPMENT

Corporate Office: 800.666.0766 / 262.783.6666

Fax: 800.691.0031 / 262.783.4860

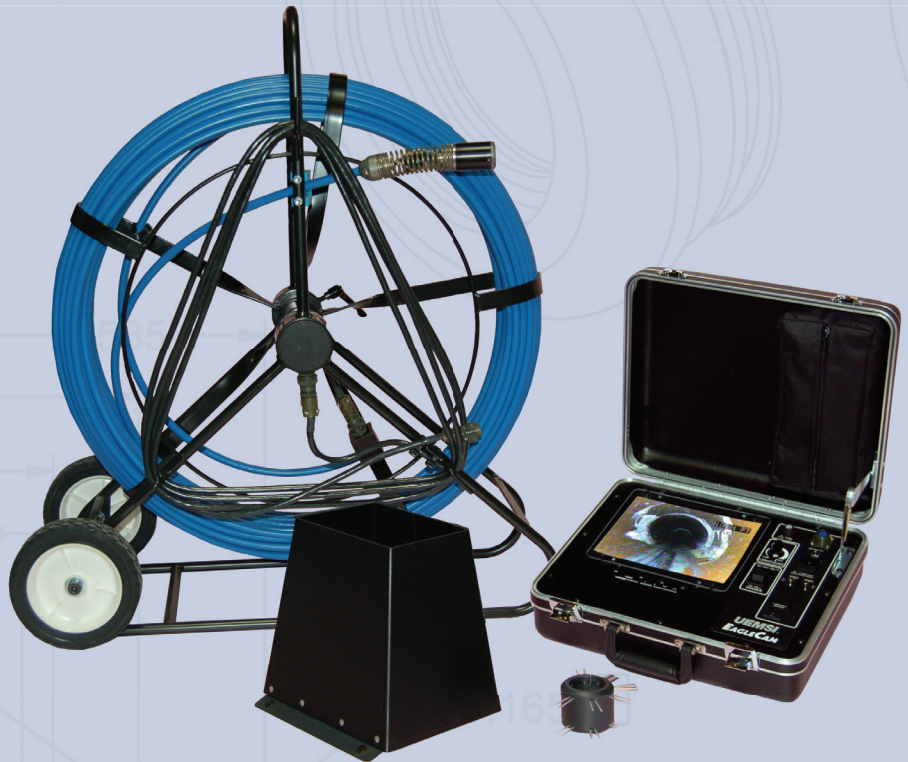
Website: www.uemsi.com / E-mail: info@uemsi.com

EAGLECAM®

Color Mini Camera Inspection System

The EagleCam® color mini camera system from UEMSI is American made and is designed as an affordable choice for looking inside ductwork, conduit, or 2" and larger pipelines. It includes a rugged, lightweight, briefcase-style power control unit with a 10.4" color LCD monitor, 200' of video push cable, and a CM-1 color camera head. The system works on either AC or DC.

Standard with the EagleCam system is UEMSI's proven multi-conductor, nylon-jacketed video push cable. It is the strongest in the industry enabling the user to push long runs, yet flexible to handle tight corners in small pipe. The cable also includes a water-blocking gel inside to prevent water infiltration, if it were to become damaged.



Upgrade Options:

Pro Eye Self-Leveling Color Camera Head:

The Pro Eye self-leveling camera head automatically keeps the picture upright. It is 1.67" OD x 2.375" L and has 21 white LEDs.

CH-3 Color Camera Head:

The CH-3 camera head is used for televising larger pipelines. It is 2.25" OD x 3" L and has 12 high-output LEDs.



The EagleCam PCU is shown with the reel w/200' of video push cable and the CM-1 color camera head.

STANDARD FEATURES

- Rugged, lightweight, briefcase-style power control unit
- 10.4" color LCD monitor with snap-on clear protective cover
- Snap-on sun shield
- Variable light intensity
- Video input and output RCA connections
- 110 VAC or 12 VDC operation
- Built-in storage bag for cords, tools, etc.
- 200' of nylon-jacketed video push cable
- 4" flexible spring cable termination for easy bend negotiation
- Cable reel constructed of lightweight, heavy-duty steel tubing
- Lightweight and durable aluminum camera housing
- Video amplifier allowing operation with up to 500' of video cable
- CM-1 camera head has 15 white LEDs for superior visibility
- 4" - 6" brush skid

UEMSI®

PIPELINE CLEANING & INSPECTION EQUIPMENT

Corporate Office: 800.666.0766 / 262.783.6666

Fax: 800.691.0031 / 262.783.4860

Website: www.uemsi.com / E-mail: info@uemsi.com

SPECIFICATIONS

REEL ASSEMBLY

- Durable steel construction
- Maintenance-free slip ring
- Rugged wheels for easy mobility
- Fiberglass rod imbedded in video cable for rigidity
- 4" flexible spring for easy bend negotiation
- Reel dimensions: 34" H x 14" W x 30" L
- Reel weight w/ 200' of cable: 49 lbs.
- Hand brake prevents reel from turning during transport
- EZ Termination for faster field service
- Cable Quick Disconnect for easy cable replacement

CM-1 COLOR CAMERA HEAD

- Video output: 1.0 V p-p NTSC standard, 75 ohm
- Imaging device: 2 lux solid state
- 2:1 interlace scanning
- Scan frequency: 15.734 KHz; 59.9 Hz
- 300,000 pixels
- 460 lines (h) resolution
- 100° lens, 2.5 mm, f 1.8
- Power: 12 VDC
- O-Ring sealed aluminum housing
- Equipped with 15 white LEDs
- Variable light output
- Lighthouse housing: High strength, clear polycarbonate
- Camera dimensions: 1.4" OD x 2" L
- Camera weight: 3 oz.

POWER CONTROL UNIT

- Rugged, lightweight, easy-to-carry briefcase-style power control unit case
- Hinged lid with built-in storage compartment
- Power indicator LED
- Complete monitor and camera controls with variable light intensity
- 10.4" color LCD monitor with snap-on clear protective cover
- Snap-on sun shield
- Video input and output connections
- Lighthouse power supply: 0-12 VDC
- Case dimensions: 5.35" H x 14.25" W x 16.375" L
- Weight: 12 lbs.

OPTIONS



PRO EYE SELF-LEVELING
COLOR CAMERA HEAD



6"-15" CENTERING SKIDS
ROLLER SKID [LEFT],
BRUSH SKID [MIDDLE],
ALUMINUM SKID [RIGHT]



CH-3 COLOR
CAMERA HEAD



TRACKER™ IN-LINE
TRANSMITTER



TRACKER™ II
LOCATING RECEIVER



MINI REEL

OPTIONS NOT PICTURED

- 250', 300', 400' and 500' Cable Lengths
- Mechanical Footage Head