



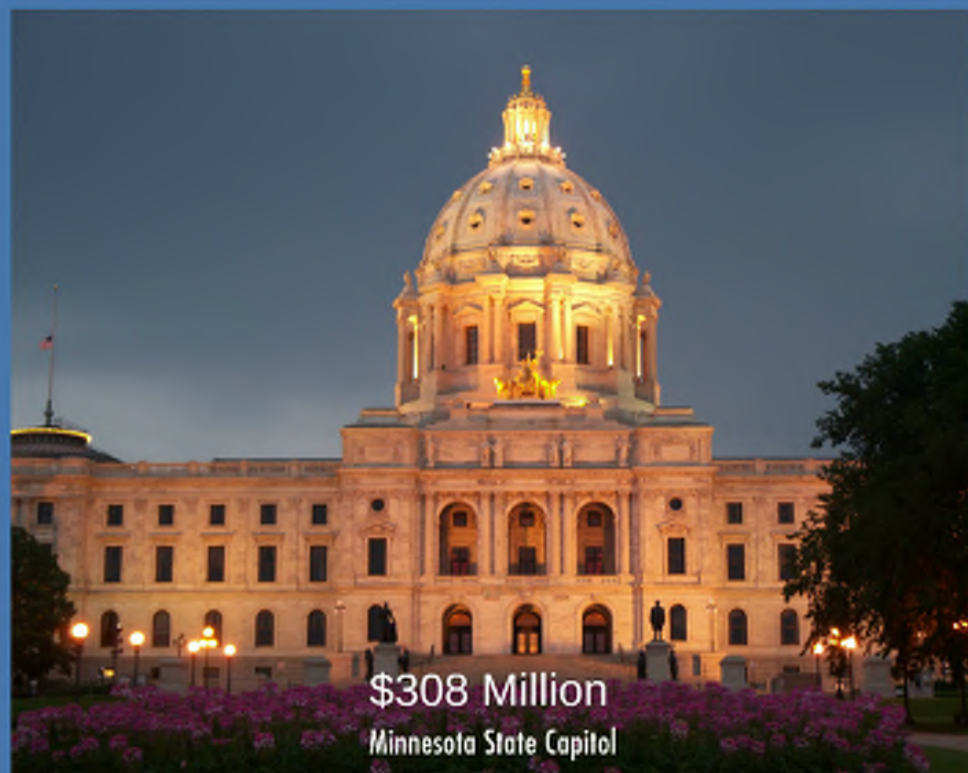
Exterior Rehabilitation

PHASE I SCOPE DEVELOPMENT

JE Dunn Construction | Treanor Architects | ADG, Inc



STATE CAPITOL PROJECTS



Wyoming State Capitol
\$200 Million



Oregon State Capitol (Preconstruction)
\$330 Million





TRIAL REPAIRS / INVESTIGATION



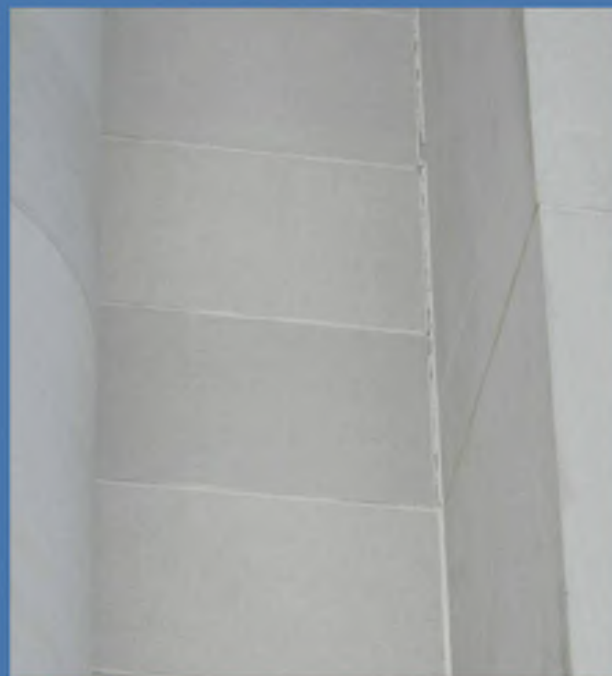
TIER I

Bond Line Failure



TIER I

Mortar Joints



TIER I

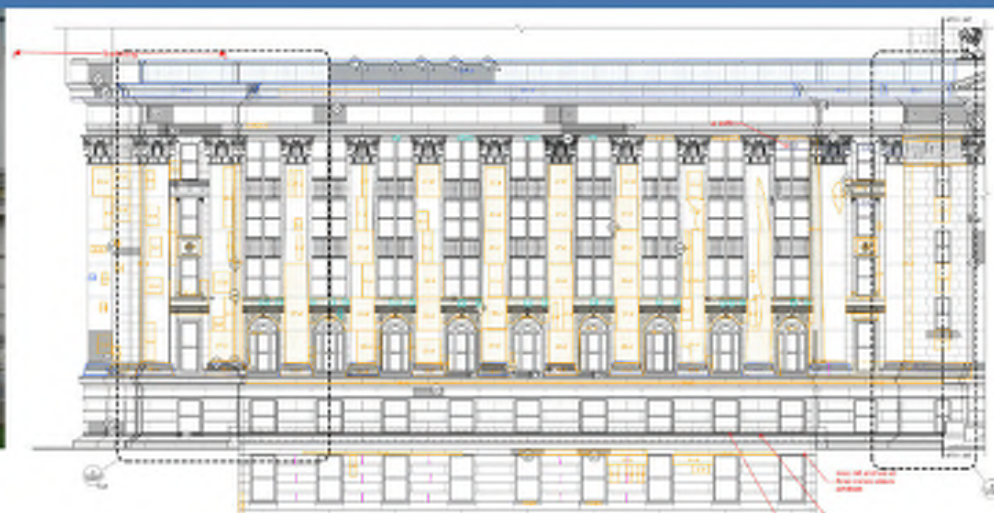
Dutchman Repair



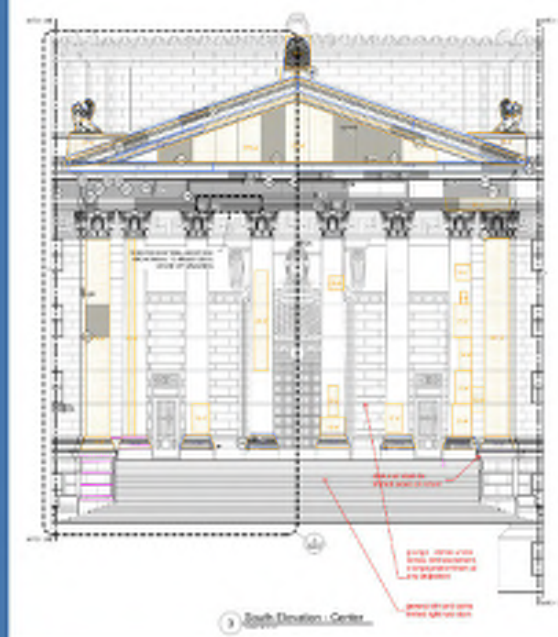
TIER I Cleaning



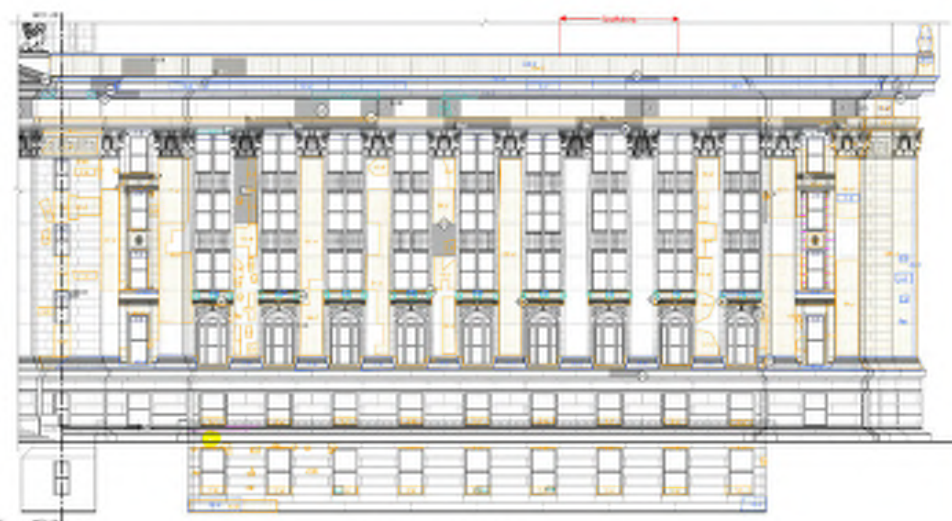
BIOLOGICAL / LICHEN



2 South Elevation - West Wing



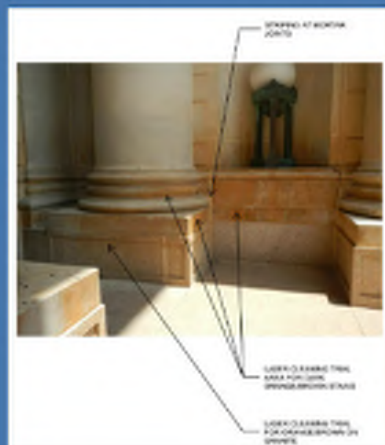
3 South Elevation - Center



4 South Elevation - East Wing

TIER I

Cleaning



SCAFFOLDING

Minnesota State Capitol



1,000 linear feet of scaffolding used at the Minnesota State Capitol

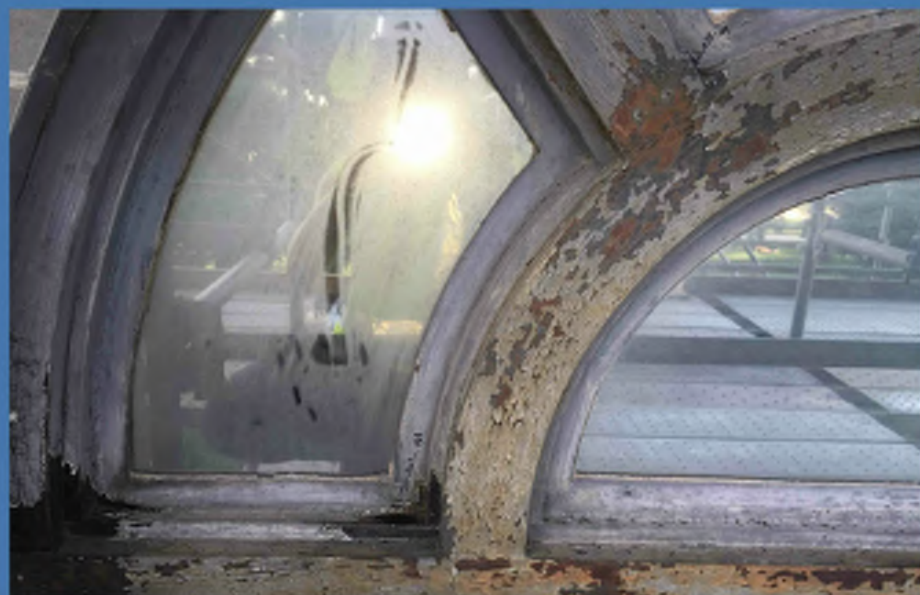
Kansas Statehouse



Scaffolding ranged from 10-300 feet high

TIER II

Windows & Cast Iron Surrounds



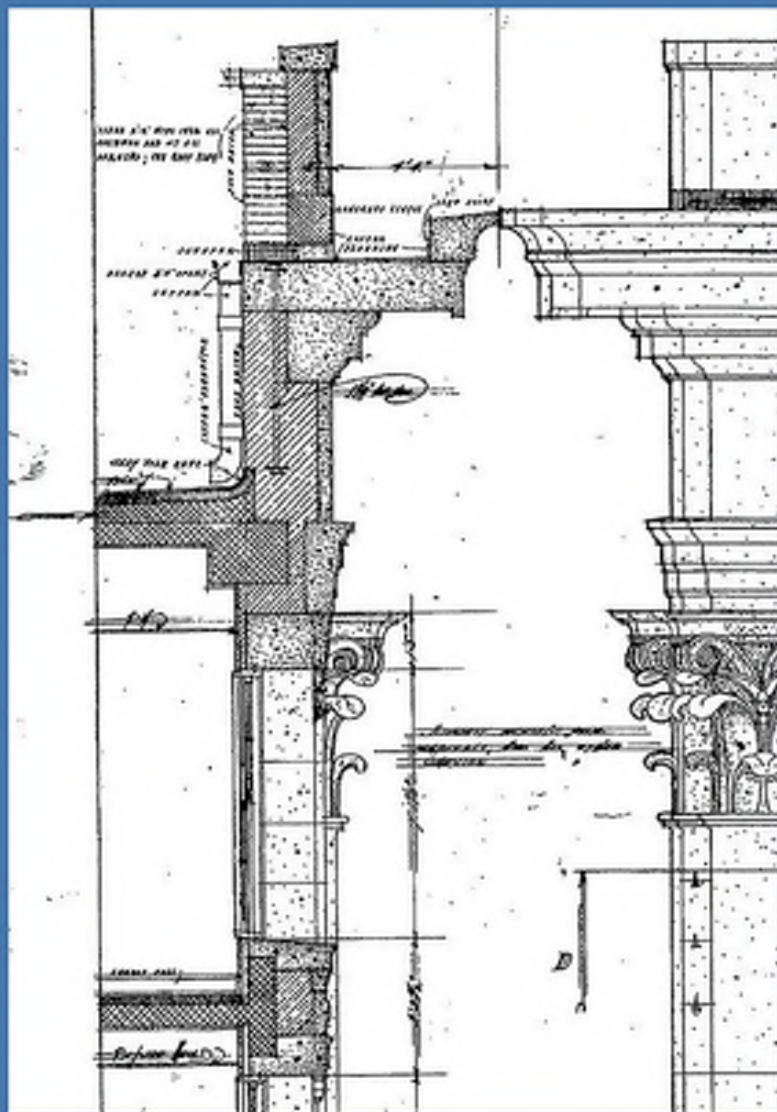
TIER II

Exterior Doors



TIER II

Parapet Through Wall Flashing & Roofing



TIER II

Light Wells



East Pedestrian Tunnel



Tunnel at Oklahoma Capitol - Photos by Sue Ogrocki - Associated Press

TIER III

Stairs



Plazas

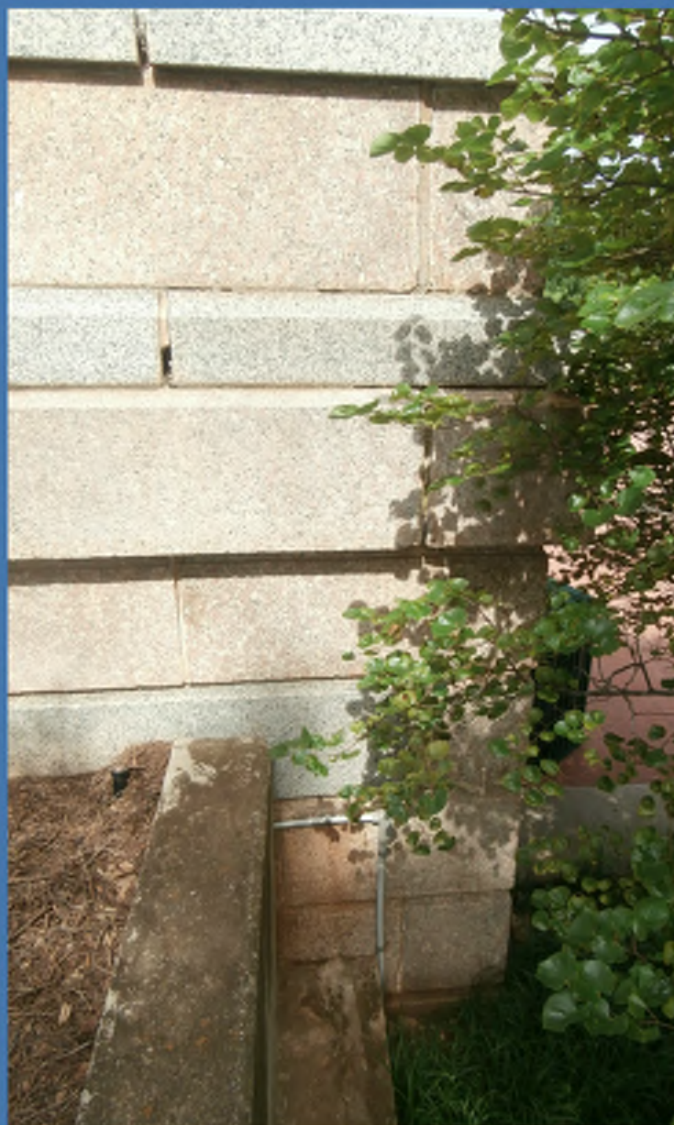


TIER III

Sidewalks



Battlements





PROVIDING THE BEST VALUE



- All Cost Estimates to be Proven by the Market
- All Work to be Bid
- Use Local Subcontractors
- Use State of Oklahoma Unit Pricing Structure
- Historical Cost Information
- AEI Mass Architects
- Allowances

SUMMARY OF THE ANTICIPATED COST

TIER I

\$20 Million

TIER II

\$27.5 Million

TIER III

\$4.5 Million